

French Letter Comes To Huiet From Soldier Boy In Algiers

Evelyn Huiet, a freshman at Madison, recently received the following letter from a Frenchman to whom she wrote two years ago and from whom she had not heard since. She first wrote to him when she got his address in her high school French class. The letter was postmarked, September 25, 1941.

The following is a translation:

Dear Friend,

It is possible that we have already corresponded formerly, for I have just found your address in an old notebook that I have had for two years. At that time I was at the College of St. John d'Augely, in the department of Charente Inferieure, in France, where I was studying. I then went to the School of Pierce-Lobi, at Rochefort, also in Charente Inferieur, and finally, in 1939-1940 I returned to St. John d'Augely. I was preparing the entrance examination at the aviation school and we were to pass the examination in the month of June 1940.

Exams Are Suppressed

But you know at that time France was invaded by the Germans and all of the examinations were suppressed, at least for the time being. I then returned home for I could do nothing better. During the war I had wanted to engage in aviation, but I wasn't able to because I was 20 years old and I had to wait to be called under the flag.

Then the Germans arrived in our country, June 26. We were very unhappy, for we had hoped, up to the last moment that our armies would stop them. Now all of my relatives and many of my friends are in the occupied zone. As for me, I stayed there up until January 1941, and then left to engage in the Army of the Armistice.

Engaged in Aviation

I am engaged in aviation. I am a simple soldier. I am in Algiers at the airbase of Blida. I rarely receive news from home. You know that one can't send letters to the occupied zone. One can only send some sorts of cards called inter-zone cards. To-

day I received three of them, but there was more than a month when I received nothing and still my parents only tell me on these cards that they are in good health, and that is about all.

But I have enough courage not to be sad because of this and of the other trials we are suffering for I hope that one day the war will stop and that all will return to order. I rarely see the newspapers, but when I see them I am very much interested in what you Americans are doing. Whatever happens, I hope that we will remain friends.

Petain Thanks Us

In France, where you have sent food, we love you and are much interested in what you are doing. For the rest our great Chief Marshal Petain had to thank you when the "Cat Harbour" (Catawba) came to Marseille. I also was there at that time. Here in Algiers the food supply is almost normal although we lack a few things, but in France they suffer from all kinds of restrictions. I would like to write more, but you and I know that in these times one can't always say what he thinks.

I hope to receive soon a long letter from you.

A cordial handshake and my friendship.

PIERRE ROUX.

Frederikson Lists Schedule

This week's Breeze carries the schedule for examinations which will begin Monday, December 15, and continuing through Saturday, December 20. Registration for the winter quarter takes place Saturday, December 13, which is the Saturday immediately preceding exams.

All conflicts in the examination schedule must be reported to Dr. Otto F. Frederikson next Wednesday, Thursday, and Friday.

Hockey Squad Elects Wilkinson As Captain For '42; Is Member Of Southeast Reserves

Dot Wilkinson, member of the '43 class, was elected captain of the varsity hockey squad of Madison for the next year, announces Jackie Turnes, '41 varsity captain. The newly elected hockey captain was a member of the Petersburg high school hockey team for three years and won her first Madison college emblem here in '39.

This fall at the state tournament in Westhampton, Wilkinson won a place on the All-Virginia second team, and then at Sweet Briar she was selected a member of the Southeast reserve team.

The '42 hockey captain is a member of Pi Kappa Sigma sorority and representative of the junior class Beta Panhellenic council; president of Page literary society, a member of Bluestone Cotillion club, and the Social committee.

The annual hockey tournament will be held in Farmville or at William and Mary next year, while games with Westhampton and William and Mary will be played on Madison's field next year.



Dot Wilkinson, recently elected captain of the varsity hockey squad for the fall hockey season of 1942.

Tonight at the picnic on back campus, captain Wilkinson will be given the traditional rabbit's foot for good luck by former captain Turnes.



Ruth Lynch, president of YWCA, who announces the madonna, the leading character in the pageant, "The Guiding Star," which will be given by YWCA members next Thursday night.

Registration To Start Dec. 13 In Reed Gym

Registration of all students for the winter quarter will be conducted in Reed gym Saturday, December 13, from eight-thirty a. m. to four-thirty in the afternoon, according to an announcement made by Miss Helen Frank, registrar.

Students will not be permitted to change from one section to another unless such changes are approved by the chairman of the student's curriculum and by the head of the department involved.

After receiving class cards and program cards in Reed gym, students are to consult with their curriculum advisors to make out their schedules for the coming session.

One program card and all class cards must be left with the student's advisor, and one initialed program card is to be taken to the registrar's office in Wilson hall.

Registration, to be arranged alphabetically by students' last names, will be as follows:

A through C, 8:30-10; D through G, 10-11; H through K, 11-12; L through N, 1:30-2:30; O through S, 2:30-3:30; T through Z, 3:30-4:30.

Schoolma'am Wins Medal

The recently published rating of the 1941 Schoolma'am as "first class" came from the National Scholastic Press association, University of Minnesota, early this fall. Now comes the report from the other nation-wide evaluating organization, Columbia university.

This rating assigns the Madison annual to the rank entitled "first place," and also awards to it a medal, with the added comment, "Your yearbook is a splendid example of what American education can accomplish."

All annuals which receive from 850 credit points up to 1,000 are listed in "first place." The Schoolma'am, edited by Martha McGavock, obtained 970 out of a possible 1,000 points. Medalist rank signifies publications from the "first place" group selected for their outstanding qualities, such recognition being accorded to not more than ten per cent of the entries.

Draper Will Portray Madonna In Pageant

Chosen by the student body last Monday, Martha Jane Draper will portray the madonna in The Guiding Star, by Esther Willard Bates, the annual YWCA pageant, next Thursday night at seven o'clock in Wilson auditorium. The part of the Angel of the Star will be taken by Mary Gregory, the runner-up in the voting for the madonna.

The play, in which all ideas are conveyed through action, is composed of five scenes: the prophecy, the enunciation, the procession to Bethlehem, the fulfillment, and the adoration.

Cast Listed

The remainder of the cast is as follows: Joseph, Barbara Tillson and the three prophets: Isalah, Betty Lou Toone; Micah, Marie Suttle; and Hosea, Emma Joyce Johncox; the shepherds: Lucille Cooke, Judy Johnson, and Anna Brown.

The kings, Margaret Moore, Margaret Schular, and Eleanor Nolte; the guardian angels, Betsy Ross, Inez Walls, Jane Dingleline, Mil Alley, Marion Wilkinson, and Ella Belle Welton; people in the procession, Betty Gravatt, Cary Addison, Margaret Bixler, Louise Vaughn, Betty Brandt, Elizabeth Willis, Margaret Hull and Diana Berkley.

Choral Club to Sing

Daisy May Park is organist for the program. The musical background will be furnished by the choral club under the direction of Miss Gladys Michaels of the music faculty. Margaret Warwick will be accompanist.

Ruth Lynch, president of YWCA, is director of the program.

Committees in Charge

Committees are as follows: Inez Walls, in charge of costumes, assisted by Mildred Gregory, Nan Scott, Peggy Parker, Eleanor Ruddle, Louise Travers; Katherine Stokes, Mary Alice Joyner, Cary Addison, and Betty Gravatt, properties; Jean Furman, lights; Barbara Tillson, chairman of makeup, with Nancy Lee Throgmorton, Jean Jennings, Evelyn Huitt, Ann Forehand, Gladys Earman, and Edith Wooding.

Eunice Hobgood will be head usher, assisted by Nancy Peters, Jean Birchall, Mary McKay, Virginia Vaughan, and Pete Wright.

Kid Party Will Be On Dec. 13

The annual kid party and toy drive, sponsored by the YW, are scheduled to be held in all dining halls on Saturday night, December 13. Everyone is asked to dress like a kid and to bring a toy to be given to some underprivileged child in Harrisonburg or vicinity.

Freshmen are asked to bring toys suitable for children from the ages of 3 to 5; sophomores to give toys for children from 5 to 7; and juniors and seniors may bring toys for children 7 to 10 years of age. Toys such as crayons and blocks, that the child can use for construction and that will help develop his initiative, are preferred.

The toys will be distributed in Harrisonburg at the Children's home, the two day nurseries, in the mission at Elkton, and the rest will be distributed through the Red Cross office in Harrisonburg.

Nine Are Awarded Membership Into Scribblers Here

Nine students were awarded membership in Scribblers, honorary society in creative writing composed of both students and faculty. The new members were required to submit tryouts for consideration to the club, and those successfully passing tryouts are Dorothy Blackburn, Evangeline Bollinger, Virginia Culpepper, Alice Griffith, Ann Griffith, Louise Parks, Margaret Schuler, Jane Sites and Elizabeth Wolfe.

The meeting of the club to judge the tryouts was held at the home of Miss Margaret Hoffman last Wednesday night with Miss Marie Louise Boje joint hostess.

Exams Are Upon Us! Are You Ready?

The same old story—as certain as we are about Christmas, Easter, Thanksgiving, and the month of June—we can also be sure of the certainty of exams. Once again they are upon us.

The halls are quiet except for the occasional gnashing of teeth and groans of despair—lights are on till twelve o'clock and many text books are for the first time seeing a ray of light. The sale of cigarettes and cokes is increased while the length of fingernails is decreased.

The day of reckoning is drawing nigh and the few days preceding are literally crammed with excitement. Closed week goes into effect, letters are written home preparing the family for the worst, and new resolutions are made regarding the next quarter. All of these are typical of exam week, at which time the faculty gives the student body the first, second, and third degree.

Untroubled by this ominous preview of coming events, every campus has its nonchalant, optimistic, and carefree group that uses closed week to catch up on all back correspondence and continued stories. They are also the ones that sit around contemplating their chances of getting that cute convertible left in their oldest pair of nylons over Ye Olde Fireplace.

Many are busy planning their exam wardrobes and checking up on (See Exam Worry, Page Four)

Chemistry Faculty Will Attend Richmond Meet

Dr. H. G. Pickett, Dr. George Williams, and Dr. Joseph Schneider are planning to attend a science conference in Richmond next Friday. During the convention Dr. R. W. Bost, head of the chemistry department at the University of North Carolina, will speak on the organic compounds of sulphur.

Exam Schedule For Fall Quarter

MONDAY, DECEMBER 15, 1941

8:00-10:00
Business Education 331e3 Lyon—L3
English, 251a1-a2 Hoffman, Ruebush—W32-38
French 131 Cleveland—R3
Physical Education 261A1-A2-A3 Savage—Pool
Social Science 471d1-d2-d3 Frederikson—RG

10:00-12:00
Art 221a1-a2 Aiken, Palmer—W39-40
Biology 321n1-n2 Miller, Showalter—W24-25
Business Education 331e2 Lyon—L3
Education 361d1-d2-d3 Lanier—RG
English 131, All Sections English Faculty—Aud.
Physical Education 261B1-B2 Covington—Ashby Gym

1:30-3:30
Education 331e1-c2 Houchell—W24
Education 461e1-c2-a1 Stanley—RG
English 301 Godshalk—W31
Home Economics 430d1 Pearman—M12
Music 230 Shaeffer—Music Room
Physical Science 451 Pittman—JL

3:30-5:30
Art 341c1-c2 Palmer, Davis—W39-40
French 141 Cleveland—R3
Home Economics 231d1-d2-d3

Pearman and Noetzel—M12-17
Home Economics 301a1-a2 Willson—W24
Physical Science 361 Pittman—JL
Physical Science 291a1-a2 Pittman, McWhite—JL

TUESDAY, DECEMBER 16, 1941

8:00-10:00
Biology 361 Phillips—W28
Chemistry 131, All Sections Chemistry Faculty—Aud.
Home Economics 420d1 Robertson—M11
Home Economics 451 Varner—M17
Music 351 Shaeffer—Music Room
Physical Education 261C1-C2-C3 Covington, Marbut—RG

Social Science 161a1-a2 Armentrout, McIlwraith—R11-14

TUESDAY, DECEMBER 16, 1941

10:12:00
Business Education 152e2 Barber—W21
Business Education 351e2 Brown—R6
Chemistry 351d1-d2-d3-n1 Williams, Schneider—RG
French 241 Cleveland—R3
Geology 221 Hanson—R11
Home Economics 450d1 Turner—M17

1:30-3:30
Biology 341 Phillips—W25
Business Education 153e3 Brown—R6
Education 311a1-a2-cd Seeger, Anthony—W22-24
Home Economics 432 Pearman—M12
Music 461 Marshall—Music Room
Physical Education 271a1-a2 Johnston—RG

3:30-5:30
Art 251 Aiken—W39
Business Education I Lyon—L2
Home Economics 320d2 Blackwell—M17
Library Science 150a1 Logsdon—Library
Physical Science 131c2 Pittman—JL
Physical Science 351 Pittman—JL
Business Education 461 Barber—R6

WEDNESDAY, DECEMBER 17, 1941

8:00-10:00
Art 321 Palmer—W40
Art 361 Davis—W39
Business Education 221e1-e2-e3 Frank, Sanders—RG
Business Education 441 Brown—R6
Home Economics 300d1-300 Blackwell, Noetzel—M15-17
Spanish 131c1-c2 Martinez—R11

10:00-12:00
Biology 351 Chappellear—W31
Business Education-Social Science 371 Brown—R14
Chemistry 451 Pickett—M11
Mathematics 131 Converse—W8
Psychology 221, All Sections
Anthony, Shorts, Seeger, Stanley—W21-22-24-25
Social Science 341c1-c2-c3-c4

McIlwraith, Armentrout—RG R11

WEDNESDAY, DECEMBER 17, 1941

1:30-3:30
Biology 131c1, c2, n1, n2, a1, a2, e2, e3
Miller, Showalter, Phillips—RG
Health Education 370e Weems—R14
Home Economics 370d1-d1a Varner—M17
Music 271 Marshall—Music Room
Philosophy 471 Gifford—W21

3:30-5:30
Business Education 231e1-e2-e3 Lyon, Sanders—RG
Business Education 481 Brown—R14
Chemistry 431 Pickett—M11
English 381c1-c2-c3 Tresidder, Schubert—W33-37
Geography 351 Hanson—R11
Home Economics 310d3 Blackwell—M17
Music 261 Marshall—Music Room
Physical Education 251ed Johnston—R14

THURSDAY, DECEMBER 18, 1941

8:00-10:00
Art 311 Aiken—W39
Business Education 351e3 Brown—R6
Home Economics 400d1 Noetzel—M15
Mathematics 122a2 Converse—W8
Psychology 121n1-n2 Lanier—W24
Social Science 261a1 Armentrout—R14

10:00-12:00
Art 241 Palmer—W40
Business Education 341e2-e3 Barber—W24
English 321 Huffman—W32
Physical Science 331d1-d2-d3 McWhite—Aud.
Social Science 131c1-c2 Frederikson—RG
Spanish 431 Martinez—R3

1:30-3:30
English 211 All Sections Logan, Ruebush, Huffman—Aud.
Geography 331a1-a2 Hanson—R11
Home Economics 141d1-d2-d3-d5

Moody, Noetzel—M11-17
Mathematics 440 Converse—W8
Music 361 Marshall—Music Room
Social Science 451 Smith—R14

3:30-5:30
Art 121 Davis—W39
Health Education 350d2 Weems—W24
Music 331 Shaeffer—Music Room
Physical Education 340 Johnston—R14
Psychology 421 Shorts—W21

FRIDAY, DECEMBER 19

8:00-10:00
English 331 Boje—W33
French 341 Cleveland—R3

Continued in Col. Four



Duo-Pianists Win Admiration At Lyceum Here With Brilliant Performance

By Margaret Warwick

The five scores played by Bartlett and Robertson last night in Wilson auditorium were sufficient proof that their audience was delighted. They liked their audience, too, according to reports from those who talked to them after the performance. Miss Edna T. Shaeffer agreed, remarking, "The audience was lovely! Its response proves that the students really like good things." The quiet and attention in the auditorium during the recital was noticeable, even in the balcony. Madison's first Lyceum number for the year was indeed a success.

The duo-pianists played Brahms' *Waltz in A flat major* as an encore after their first group of numbers. The next group brought the encore *Valse* by Arensky, as a request, and at the end of the advertised program, their hearers were thrilled by the beloved *Liebestraume* by Liszt, a Brazilian folk dance, and an arrangement of a Bach aria, *Sheep May Graze Safely*, the last number being

announced by Mr. Robertson as a request.

"Which did you like best?" was heard from students on all sides, but opinions varied, some in favor of the graceful, brightly-gowned Miss Bartlett, some insisting that they "liked him." Few saw any difference in the pianistic ability of the couple.

"They were grand," was the general student opinion. Members of the music faculty were enthusiastic about the performers' complete harmony in timing and expression which has been highly praised in the reviews distributed on campus. "They are real artists," "excellent ensemble," "perfect teamwork," and "their technic is flawless" were comments from various music teachers.

Miss Elizabeth Harris, who has heard the performers several times before with orchestra, says, "They are wonderful with orchestra, but much more delicate in solo work. Each has an identical conception of the whole. They have charm and humor in addition to keen musical insight."

Majority Opposes Even Partial Intervention Into Europe Now; Colleges Vote 4-1 No

American college students are four to one against sending U. S. air force planes and pilots to Europe, a recent student opinion poll shows. Why is it that so large a majority opposes our at least partial intervention in Europe now?

American colleges and universities are the most fertile recruiting field for the Army and Navy Air Corps. Seeking the best educated for its aviation ranks, the government has depended primarily on colleges to supply the pilots for the thousands of aircraft being built. Therefore, it is from those who will later man these planes that the survey is taken.

Do we vote against intervention because our men do not want to go themselves and our women do not want to see them go? Or is our vote cast with the firm belief that what we advocate is best for the nation? For the sake of our national and individual freedom this may be the time to act, as is the opinion of the twenty-five per cent student minority.

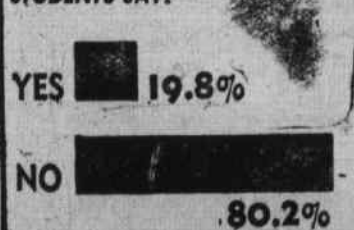
These are the most repeated comments gathered by staffs of the 165 cooperating newspaper members, including the *Breeze*: "Send the planes but not the men" (Randolph-Macon),

"Not if we are in real danger of getting in war with Japan" (Florida State College for Women), "With the R.A.F., they don't need us" (Northwestern).



Should U.S. Send Planes And Pilots to Europe?

STUDENTS SAY:



IS MODESTY LOST VIRTUE?

It seems to us that it might be a good idea to take up a collection to buy lunches for the girls who persist in standing on front of campus along Main Street all day waving to the soldiers passing through. Maybe we should even revise the class cut system to make allowances for such occasions. But we doubt it.

Southern hospitality and friendliness to soldiers is one thing but "Southern womanhood" standing on the street making a spectacle of itself is another.

We're all for national defense. Don't get us wrong. We're more than willing to do our duty by the men in the armed forces, but we don't believe it's necessary to stand all day on front campus and shout to them as they pass. There's nothing wrong with doing it really, except it's none too good for the school and it doesn't look so pretty.

Examination Schedule

(Continued from Col. One)

Home Economics 361d1-d2-d3-d4
Willson, Noetzel—M11-17
Social Science 151e2-e3, d1-5, d2-5, d4-e1, d3
Armentrout, McIlwraith, Smith—RG, R11-14
Mathematics 231 Converse—W8

10:00-12:00
Art 231 d1-d2-d3-231 Aiken, Davis, Palmer—W39-40
Education 435 ab-c Anthony, Houchell—W21
English 341 Schubert—W33
English 471 Logan—W31
German 131 Sawhill—R11
German 231 Sawhill—R11
Library Science 351 Hoover—L21
Mathematics 341 Converse—W8

1:30-3:30
Biology 331 Chappellear—W25
Business Education 321 e2-e3 Sanders—L2-3
English 371 a1-a2-a4 371

Schubert, Tresidder—W21-24
Logan—W31
Sawhill—R11
Anderson—Music Room

3:30-5:30
Physical Education 131, all sections
Covington, Marbut, Savage—RG
Latin 351 Sawhill—R11
Home Economics 340 Brown—M22

SATURDAY, DECEMBER 20

8:00-10:00
Biology 131d1-d2-d3-d4-d5
Showalter, Miller, Chappellear—Aud
Latin 441 Sawhill—R11
Music 161 a1-a2 Shaeffer—Music Room
Physical Education 231c-e1, d1-e2, d2-e3, d3n
Johnston, Savage—RG
Psychology 321 Shorts—W22
Social Science 360 McIlwraith—R14

10:00-12:00
Bible 331 White—W24
English 421 Boje—W33
Geography 150 e1 Hanson—R11
Music 161 c Schneider—Music Room
Spanish 231 c1-c2 Martinez—R3

THE BREEZE

Member Virginia Intercollegiate Press Association

Published weekly by the student body of Madison College,
Harrisonburg, Virginia

Subscription Price.....\$2.00 a Year

REPRESENTED FOR NATIONAL ADVERTISING BY
National Advertising Service, Inc.
College Publishers Representative
420 MADISON AVE. NEW YORK, N. Y.
CHICAGO · BOSTON · LOS ANGELES · SAN FRANCISCO

1938 Member 1939
Associated Collegiate Press
Distributor of
Collegiate Digest

Editor.....JULIA KILPATRICK
Business Manager.....ELEANOR NOLTE
Assistant Editor.....LOUISE PARKS
Managing Editor.....EMILY LEWIS
Copy Editor.....ANN GRIFFITH
Cartoonist.....PAT JOHNS
Headline Editor.....DOROTHY HOLLINS
Desk Editor.....GRACE RICHARDSON
Feature Editor.....JANE SITES
Photographer.....FLORA MORRIS
Circulation Manager.....RUBY MARTIN
Chief Typist.....ANNIE BRADSHAW

EDITORIAL STAFF

Alice Monroe, Mary Nelson Ruffin, Ann Valentine,
Marion Watkins, Virginia Post, Edna Reid.

CUB REPORTERS

Katherine Robertson, Anne Chapman, Betty Lee Short,
Anne Holt, Barbara Anne White, Mary Elizabeth Robertson,
Doris Cline, Georgette Carew, Mary Cary Addison, Charlotte
Stirt, Betty Wolf, and Elsie Jones.

HEADLINE STAFF

Emma Jane Rogers, Pete Wright, and Lena Bourne.

BUSINESS STAFF

Margaret Mayhugh, Jean Birchall, Margaret Parsons,
Elizabeth McDaniel, Marion Dameron, Virginia McIlhenny,
Betty Brandt, Elizabeth Bobbitt, Sarah Overton, Mary Lee
Dillard, Ellen Collins, Anne Holt, Margaret Dew Settle,
Jane Rebman, Lillian Joyner and Phyllis Black.

CIRCULATION STAFF

Lucy Dix, Celeste Poole, Marguerite Muse, Ruth Trent,
Mary Helen Johnston, Dorothy Knox, Harriet Smith,
Katherine Garden, and Valle de Pittard.

FEATURE STAFF

Jo Anderson, Betty Lou Toone.

TYPOGRAPHY STAFF

Nancy Lee Throgmorton, Mary McDonald, Molly Bargh,
Barbara Roush, Sarah Overton, Ann Holt, Nancy Brown,
Dotty Leache, Helen Bishop, Titi Ruiz, Mary McDonald,
and Helen Johnson.

What's News Tech Colonels To Furnish Music On Campus For Dance Tomorrow Night

French Circle Has Two New Members

Le Cercle Francals formally initiated two new members, Nancy Smith and Glen Lynn Watton, on Monday night. At the business meeting a letter received from a French soldier in Algiers, giving inside information of French conditions, was read and explained.

Old members presented a short one-act play entitled *The French Maid and the Phonograph*. Those who took part in the play were: Tillie Horn, Margaret Aitken, Virginia Pedisch, Dorothy Clift, Vivian Snyder, Mary Frances Sours, Rose Marie Engleman, and Dorothy Hollins.

Alpha Holds Picnic

Alpha Literary society gave a picnic for its members at camp last Friday from 4:50 to 7:45 p. m. After supper the club gathered around a campfire by the river telling riddles, jokes, ghost stories and singing Christmas carols.

Mr. and Mrs. J. K. Ruebush and Mr. and Mrs. E. McWhite, sponsors of Alpha, were guests.

Kurka is Guest

Miss Sally Ann Kurka, newly appointed nutrition consultant in the state department of health, was guest of Mrs. Bernice Varner and Miss Clara Turner this week. She will return later in the year to talk to the seniors.

Y. W. Vespers

A Christmas program will be given at the Sunday vesper program in Wilson auditorium at 1:50 p. m. The service will be directed by Ruth Lynch.

A feature of the program will be a solo by Margaret Moore.

Granddaughters Meet

Last Saturday evening the Granddaughters club held an informal supper in Junior hall kitchenette. Guest at the club's meeting was Miss Elizabeth Cleveland, sponsor.

In charge of the supper's arrangements were Libby Reynolds, chairman, Dot White, and Nancy Peters.

Stratford Initiates

Stratford dramatic club initiated six new members into the organization this week. They are Jean Barnes, Evangeline Bollinger, Brownie Lester, Elizabeth Pranis, Nancy Lee Throgmorton, and Barbara Tillson.

Ward To Talk Here

Ward to Talk Here

Miss Helen Ward, who is in charge of school lunch rooms in the state, will talk with the home economics girls on Monday and Tuesday on the various phases of lunch rooms. While in Harrisonburg she will be the guest of Miss Julia Robertson.

Send The Breeze Home

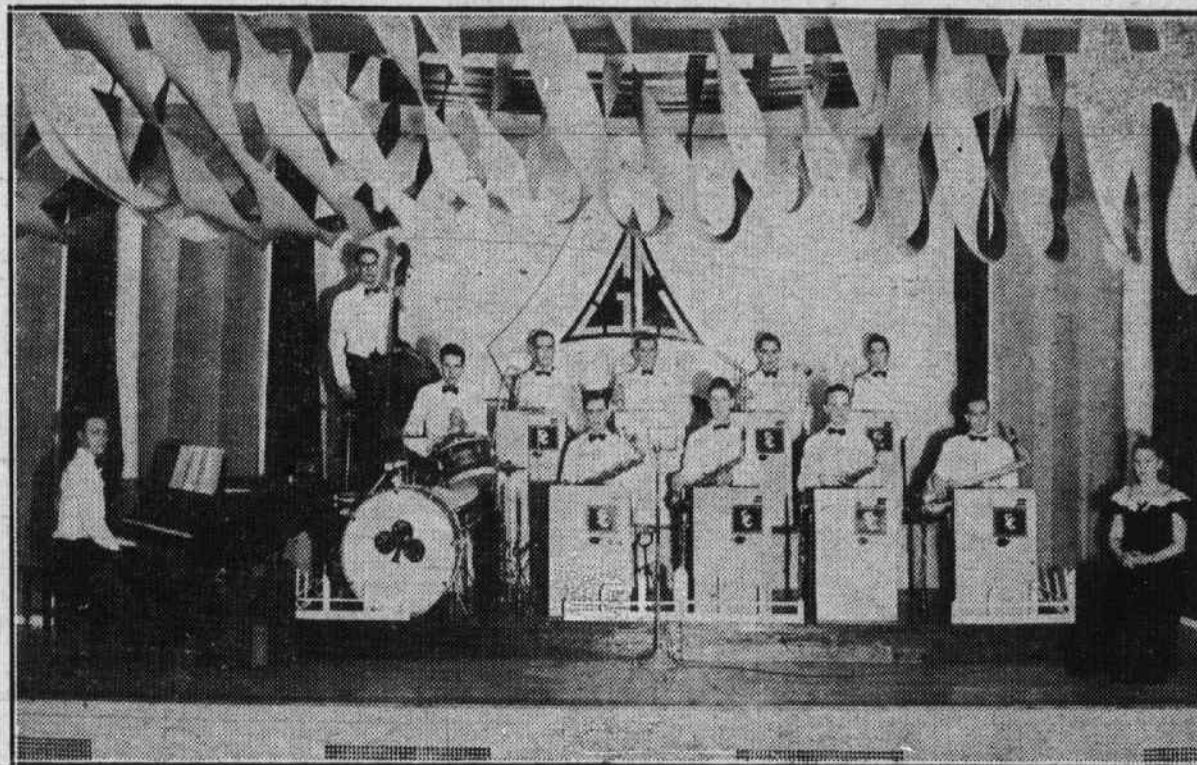
HEAR YE

Says Valley Gift Shop

Presents That Are Distinctive In:
GLASSWARE
STROCO WOOD
FINE PICTURES
Non-Tarnishing Brass and Copper
WRITING PAPER
BIBLES AND PRAYER BOOKS
BUXTON LEATHER GOODS
Are The Headliners
Many More For You Here

THE VALLEY GIFT SHOP

'Remembrances of Yours'



The Southern Colonels, Virginia Tech's dance orchestra which will play for the Panhellenic Christmas dance tomorrow night in Reed gym.

With the Southern Colonels of Virginia Tech furnishing the music, the annual Panhellenic dance will be held in Reed gymnasium tomorrow night from 8:30 until midnight.

Organized in the early '20's as a five-piece band, the Colonels have grown steadily in both size and reputation until they are now one of Virginia's most outstanding dance orchestras. The Tech campus by no means limits their activity, their engagements covering Virginia and West Virginia cities and colleges.

Theme is Christmas

Their Christmas vacation will be spent as customarily, in playing for prominent Christmas dances throughout the east.

The decoration theme, in red and green, will follow the spirit of the Christmas season, with a part of the window drops carrying out the idea, the remainder being large scale seals of the three campus sororities.

Alley Leads Figure

On the right at the far end of the gym, will be a Santa Claus with his pack, through which the men will come into the figure. The girls will enter from the left through a house in front of which will be a decorated Christmas tree and a snow man. As the couples meet in the center, snow will fall from the ceiling.

Mil Alley, chairman of the Panhellenic council, will lead the figure with Dr. Kennon Hancock of the University of Virginia hospital. Other members of the council and their dates are: Dot Wilkinson with Joe Mack of University of Richmond; Helen Miller with Bill Muncaster of Wilmington, Delaware; Evelyn Jefferson with Ham Fox of Baltimore; T Albright with Doug McCraig of

Petersburg; Jane Elmore with Bobby Vaughan of Washington and Lee; Margaret Gainfort with David Roane of Annapolis; Naomi McAllen with Carl McLeod of Washington & Lee; Dorothy White with Leon Garber, Bridgewater.

Officers in Figure

Alpha Sigma Alpha officers and their dates for the figure are: Mary Burger, president, with William S. Burger of Cumberland, Maryland; Annette Rogers, vice president, with Joe Gish of McGeheysville; Mary Sue Stull, secretary, with Beverly Appleton of Champagne, Ill.; Gertrude Ames, treasurer, with Bob Hensley of Baltimore, Md.; Jean Hallock, assistant treasurer, with Jack Lawrence of West Point, Va.; Mary McKay, editor, with William Gallagher of Clifton Forge; Eunice Hobgood, chaplain, with Harvey Hobgood of Lawrenceville, Va.; Ann Gough, registrar, with Lieut. Philip Anthony Baker III, of Pensacola, Florida.

Officers of Pi Kappa Sigma who will be in the figure are: Phyllis Callahan, president, with Bill Forbes of

Roanoke; Eleanor Pincus, treasurer, with Al Fleischmen of Richmond; Ethel Holloman, recording secretary, with Terry Dennis of University of Richmond; Eleanor Nolte, corresponding secretary, with Bernard Logan of Harrisonburg; Eleanor Holliday, sergeant-at-arms, with Charles Earman of V. P. I.; Eleanor Mennin, keeper of archives, with Joe Simpson of Portsmouth; Dot Council, chaplain, with Jack Beale of Franklin.

Schaff Heads Committee

Sigma Sigma Sigma officers and their dates are: Margaret Moore, president, with Bob Moore of Richmond; Jean Bell, vice president, with Dan Thornton of V. M. I.; Emily Lewis, treasurer, with Thomas Matthews of University of Virginia; Ann Valentine, recording secretary, with Bill Blackburn of V. M. I.; Lillian Burnley, corresponding secretary, with Paul Council Jr. of Swarthmore; Margaret Hoffman, keeper of grades, with Joe Logan of Randolph-Macon; Betty Ames, Triangle correspondent, with Jack Swenson of Portsmouth; Hannah Heath, sentinel, with Curtis Lewan of Roanoke.

EVERYONE WILL WANT TO WEAR THIS BEAUTIFUL School Jewelry
It shows school spirit
CHARM OR PIN \$1.00 UP
The perfect gift for the girl friend

Hefner's Jewelry Store

BE BRIGHT!

MAKE YOUR CLOTHES LOOK NEW AGAIN

HAVE YOUR
Suits, Plain Dresses and Plain Coats
Cleaned and Pressed
Cash and Carry
60c

Buddy Hayden
Cleaner and Dyer
65 W. Elizabeth Street

MAKE

JULIA'S RESTAURANT

YOUR STOP-OFF PLACE

Hot Sandwiches

Cold Sandwiches

Ice Cream

On Main Street

HAYDEN'S

Dry Cleaning Works

SUITS, PLAIN DRESSES
AND PLAIN COATS

CLEANED AND PRESSED

Cash and Carry 60c

165 North Main Street

The Smart Madison Girl Will Find
SMART FASHIONS

at Harrisonburg's Style Center
THE PARISIAN SHOP

46 S. Main St.
SKIRTS SWEATERS BLOUSES

ASK THE STUDENT WHO'S
BEEN THERE

Loker's Shoe Repairing Shop
Phone 86-R 45 E. Market St.
WE DELIVER FREE

SALE!

DRESSES AND COATS

LET JIMMIE MAKE
SOME

Christmas Suggestions

JIMMIES DRESS SHOP

80 East Market Street

"At Homes" To Be Held Before Dance

For the students and their dates, "at homes" will be held Saturday evening before the dance, from 7:30 to 8:30 o'clock. Freshmen and sophomores and their dates will go to Alumnae hall, juniors to Junior hall and seniors to Senior.

Chaperon in Alumnae hall will be Miss Marine Aleshire. Miss Clara G. Turner will pour, and honor guests will be Mrs. Cook, Miss Turner, and Miss Aleshire.

Mrs. Anne Lincoln will chaperon in Junior hall. At the table will be Mrs. Bernice Reaney Varner. Honor guests will include Mrs. Lincoln, Mrs. Varner, Miss Margaret Hoffman, Miss Marie Louise Boje, and Miss Nellie Walker.

The chaperon in Senior hall will be Mrs. Mamie Stevens. Pouring will be Miss Ruth Hudson, and honor guests, in addition to Mrs. Stevens and Miss Hudson, will be Mrs. Althea Johnston and Miss Edythe Schneider.

Economics Staff Has Party

The home economics staff of Madison college will give a dinner party on Monday evening at Shenandale for Mrs. Lois Davis, newly-wed member of the staff.

Vivian Edwards and Diana Berkeley gave a demonstration on the use of surplus commodities to the adult class of Harrisonburg at the nursery school on Wednesday afternoon.

The committee working on the figure is composed of Mil Alley, Dot Wilkinson, and Ruth Moore.

The refreshments committee is composed of Frances Waddell, chairman, Ann Valentine, Betty Ames, Lib Neale, Sugar Johnson, and Cookie Knox.

SHIPMENT

OF

NEW

EVENING DRESSES

DAILY

THE QUALITY SHOP

East Market Street

SPECIALIZING

IN

COLLEGE JEWELRY

COME IN AND SEE OUR FINE
SELECTION

John Taliaferro and Sons

South Main Street

Xmas Suggestions

Eaton's Stationery

Desk Sets

Fostoria Glass

Cards and Books

NICHOLAS BOOK STORE

THE

FAMOUS RESTAURANT

"THE PLACE THAT SATISFIES
ALL THOSE WHO ARE
FUSSY ABOUT
THEIR FOOD"

Odd-Even Game Ends Class Hockey Tourney

The class hockey tournament ended this afternoon with the annual game between the odd-even teams, which were composed of the best players from the four class teams who have been participating in the tournament.

The junior and senior teams are now tied for first place after the juniors beat the sophomores 1-0 and then dropped their game to the seniors 3-0, and the seniors lost to the sophomores 1-0 and beat the freshmen 2-0. In the other match game of the tournament the sophomores won from the freshmen 4-0.

Tonight the players of all the class teams and the varsity squad are having a picnic on back campus to climax the '41 hockey season.

The seniors who composed the winning team are Mary Balasca, Betty Sanford, Ruth Klser, Jane Dingle, Elizabeth Dalton, Peggy Pultz, and Lucille Wagner, with Balasca high scorer for the team with three points.

Members of the junior squad were: Jackie Turnes, Dot Pitts, Tommy Jacobs, Tee Albright, Elizabeth Haslep, Jean Bell, Hannah Heath, Ethel Holloman, Dot Wilkinson, and Emily Lewis.

The sophomores composing their team were Stella Kidd, Marjorie Willard, Judy Johnson, Jo Donald, Evelyn Kerns, Johnny West, Edna Parker, Mary Alice Joyner, Eula May Shelar, Mary Tocco, and Dot Fox.

Freshmen substituting on the two teams were Peggy Winfield, Hope Bulst, and Ellen Stout.

Members of the freshmen teams were: Virginia Bowen, Marjorie Berkley, Christine Banner, Merle Dawson, Margaret Delth, Maxine Dugger, Peggy Parker, Nadine Burnett, Mary Wright, Mary Virginia Dalman and Phyllis Black.

The members of each class team will receive a numeral denoting their class.

MENTION THE BREEZE
WHEN YOU BUY
IT IDENTIFIES YOU!

GIFT SETS FOR "HIM"
Yardley \$1.10 to \$7.00
Lentheric \$1.00 to \$7.50
Coty, Williams, Mennens, Woodbury,
From 89c Up
PEOPLES DRUG STORE

Xmas Gift
HEADQUARTERS

JAMES
120 South Main Street

You Will Find It At Any
Of Your Favorite College
Hangouts

DRINK

Coca-Cola

IN BOTTLES

The Pause That Refreshes

Student Game Is Friday

The annual Old Girl-New Girl basketball game will be played next Friday night at eight o'clock in Reed Gym. This game will officially open the 1941-42 Madison basketball season.

Volleyball Tourney To Begin Monday

To eliminate a team which will later oppose a volleyball squad composed of faculty members, class volleyball contests will be held next Monday and Tuesday nights in Reed gymnasium.

Games are scheduled as follows:

Monday Night

8:00—Freshmen vs. Seniors

8:45—Sophomores vs. Juniors

Tuesday Night

8:15—Freshmen vs. Juniors

9:00—Sophomores vs. Seniors

Practice, which has been in full swing this week, ends tonight. After the class games are completed the winning team will meet a faculty team composed of Miss Louise Davis, Miss Helen Marbut, Miss Louise Covington, Miss Dorothy Savage, Mrs. Edna Frederikson, Miss Martha Boaz, and Miss Helen Frank.

Pi Kappa Initiates Seventeen Pledges Tuesday Night

The seventeen pledges of Pi Kappa Sigma sorority were formally initiated last Tuesday night. They were as follows: Betty Jane Bennett, Marion Dameron, Travis East, Corrine Millikin, Katherine Hastings, Ruby Martin, Carolyn Driver, Frances Ellis, Madeline Hurt, Virginia Ferguson, Edith Johnson, Isabel Gilmer, Joyce Miller, Dorothy Sibby, Margaret Windson, Anne Wilburn, and Jeanette Wade.

An informal Christmas party has been planned by the members of the sorority, scheduled for next Tuesday night at the Pi Kappa house. They will have a Christmas tree and will exchange gifts among themselves.

CALENDAR

Dec. 5—Party for Methodist girls at church—8:10 p. m.

Dec. 6—Sorority "At Homes"—

7:30-8:30 p. m.—Alumnae, Senior, and Junior halls.

Movie—No, No, Nannette—

Wilson auditorium 8:00 p. m.

Panhellenic dance—Reed gym

—8:30 p. m.

Dec. 7—Y. W. C. A. program—

Wilson auditorium 2:00 p. m.

Dec. 11—Y. W. C. A. Christmas

pageant—Wilson auditorium

7: p. m.

Dec. 12—Old girl-new girl bas-

ketball game—Reed gym 7:00

p. m.

Dec. 13—Y. W. C. A. Christmas

party—all dining halls. 6:00

p. m.

Spanish movie—Los Heroes

Del Barrie—Wilson auditori-

um 8:00 p. m.

Dormitory Christmas parties

10:00 p. m.

Dec. 14—Glee club Christmas

vespers—Wilson auditorium

—4:00 p. m.

Exam Worry

(Continued from Page One)

the faculty wims and rigors. After getting dressed fit to a professor's taste, enter the classroom and flash him or her your most winsome smile as you collapse in your seat—then and only then are your chances as good as any to flunk in style.

Many of us are convinced that the verse about the happy morons was dedicated to a coed at exam time. The verse is as follows—in case you don't recall it:

Happy little Moron
Just doesn't give a —
I wish I was a moron,
Who knows, perhaps I am.

PHONE 605
THE MCCLURE CO., INC.
Printers
WE MAKE RUBBER STAMPS
Staunton, Virginia

BRING YOUR DATES
TO THE BLUEBIRD FOR
DINNER AND REFRESHMENTS
THE BLUEBIRD

FRIDDLE'S RESTAURANT

IN THE CENTER OF TOWN

Student Headquarters
MEET YOUR FRIENDS AT
FRIDDLE'S

LATEST VIC RECORDINGS
Tastiest Sandwiches

GIFT SUGGESTIONS

Eaton's Fine Letter Papers

Shaffer Pens,

Desk Sets

WRITING KITS FOR THE
MAN IN CAMP

Zipper Notebooks

Zipper Cases

Leather Desk Sets

FROM

PRICKETT'S

65 East Market Street

Eight Students Take Part In Voice, Piano Recital

Eight piano and voice students took part in a class recital in Harrison hall recital room on November 27.

Sarah Frances Barham played Minuet, by Bach, Carol Tinker offered Sonatina, by Beethoven, and Louise Miller played Grieg's Norwegian Dance. All are students of Miss Elizabeth Harris.

Miss Edythe Schneider's pupils who were on the program are Sybil Summers, who sang The Last Song, by Rogers, accompanied by Lucille Zlotkin, and Kathleen Pickett, singing Calbreath's My Love Rode By, with Mrs. H. G. Pickett at the piano.

Pupils of Miss Gladys Michaels appearing were Nancy Rowe, playing the allegro movement of Mozart's Sonata in F; Betty Turner, who played Concone's Morning Song; and Margaret Warwick, playing Valse Chromatique, by Leschetizky.

Send The Breeze Home

CHRISTMAS SEALS



Protect Your Home
from Tuberculosis

EXCLUSIVE WITH US

A thrilling
new gift idea



Perfume Stick

• "Why it's perfume! Not the usual liquid... but a new "solid" perfume in a modern guise." Looks like a lipstick, can't evaporate or spill, and there are 12 fragrances, as romantic and light-hearted as "ahe" is herself. Play Santa with RIC... the modern way to apply perfume... \$1.00

AS ADVERTISED IN VOGUE

JOSEPH NEY & SONS

TBC Control Needs Help Will You Give Yours?

Last year 1,385 Virginians died from the tuberculosis infection, and the greatest number of these deaths were in young women from the ages of twenty to twenty-four years.

By buying the red T. B. seals, which the members of Sigma Sigma Sigma sorority are selling on campus, you can do your part in combatting this dread disease. The health of some boy or girl your age is dependent on your purchasing these seals, the returns of which are used to sponsor X-rays, and to help maintain the upkeep of state sanitariums for this disease.

The thermometer in Harrison lobby with its top temperature \$200 is the aim to be reached in this sale, and results will be marked up each day.

Coca-Colas waged an all-out campaign for some of America's collegians the other night. It was in the SAE house at Emory university. A new dispensing machine (an automatic vendor that mixes cokes while you watch) paid off exactly 167 drinks for a mere dime.—ACP.

HOUBICANT

Quelques Fleurs Vanity

\$1.50

Williamson Drug Company

WARNER BROS.
HARRISONBURG THEATRES
VIRGINIA

Monday Through Thursday
Dec. 8 to 11

BIRTH OF THE BLUES
with
BING CROSBY
MARY MARTIN
BRIAN DONLEVY

Friday, December 12th

Robert Preston
Ellen Drew
in
THE Night of JANUARY 16th

Saturday, Dec. 13

TEX RITTER in

"Rolling Home To Texas"

STATE

Monday—Tuesday—Wednesday
December 8—9—10

IRENE DUNNE
ROBERT MONTGOMERY
in
Unfinished Business

Thursday—Friday—Saturday
Dec. 11—12—13

RADIO'S CHAMPION
CLOWNS IN A COMIC CLASSIC
LOOK WHO'S Laughing
with EDGAR BERGEN and CHARLIE MCCARTHY