

# THE BREEZE

SPECIAL

Madison College, Harrisonburg, Virginia, Tuesday, December 18, 1951.

ISSUE

## Marilyn Miller Portrays Madonna As 'Y' Presents Annual Christmas Pageant



DECEMBER 16, 1951—The Nativity scene as portrayed by the "Y" at its Christmas Pageant. Above left to right: Betty Lou Walters, Juanita Cocke, Anne Colonna, Marilyn Miller (seated), Emily Woodford, Reid Waggy, Nan Rennie, Betty Hiner, Johnnie Lou Thompson (kneeling), Lou Jefferson, Laila Grubb and Leroy Harper. The Pageant was held at 3:00 p.m. with Marilyn Miller as Madonna, Reid Waggy as Joseph and Betty Hiner and Anne Colonna as alternate first angels.

### Reid Waggy, A Colonna, B. Hiner Take Big Roles

Portraying the parents of the Holy Child were Marilyn Miller as the Madonna and Reid Waggy as Joseph, while Ann Colonna and Betty Hiner alternately represented First Angel in the annual Christmas pageant presented on Sunday afternoon, December 16, in Wilson Auditorium. The traditional program, The Christmas Story, was under the Sponsorship of the Young Women's Christian Association and Young Men's Christian Association.

#### This Special Issue

The Breeze presents this special Christmas issue to all Madisonsites as the publication's Season's Greetings to the college.

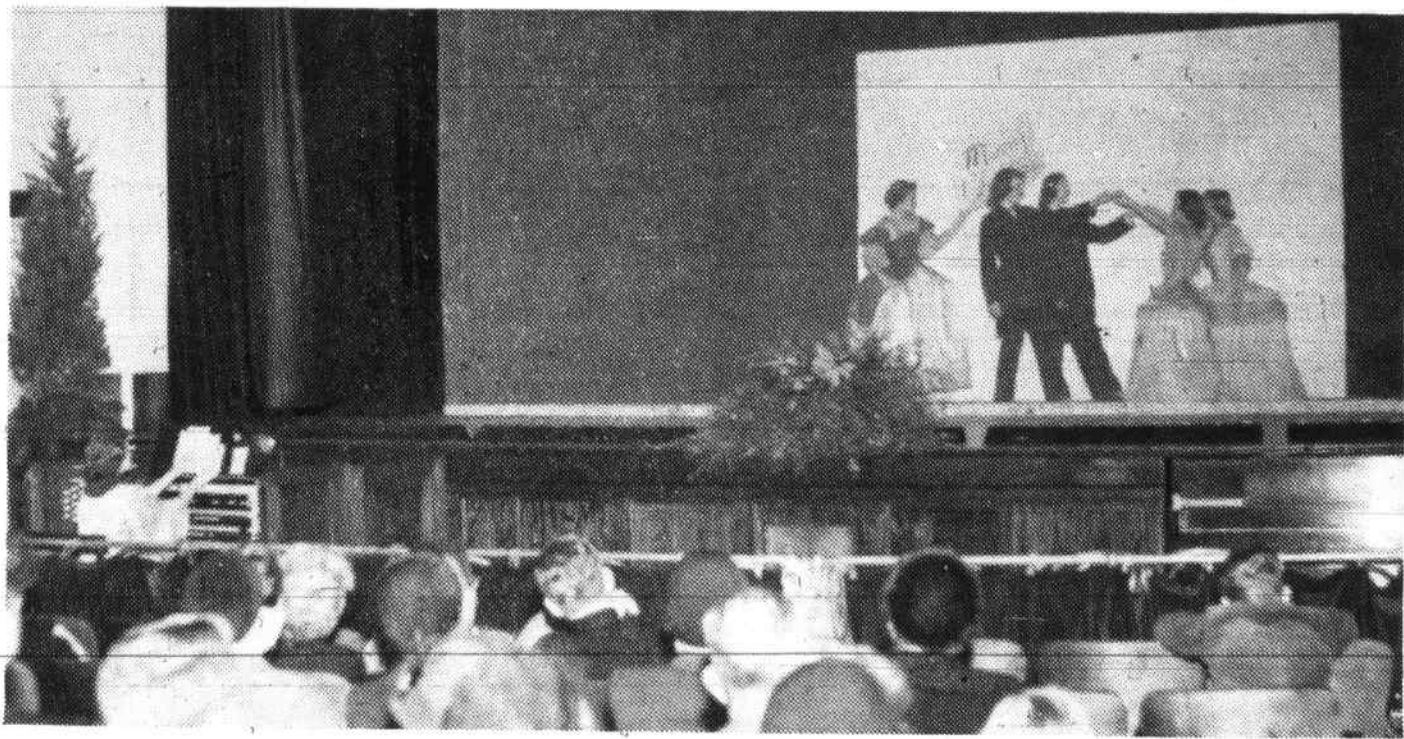
In this issue, which is largely a pictorial parade of certain events, pictures of the Nativity scene are first made public. Page one is devoted to the Christmas Season; the Christmas pageant, the Glee Club program, and the Christmas dance.

Page two portrays some of the spotlight events of the year, 1951—and so Madison closes the year Nineteen hundred and fifty one!

Mary, Joseph, and First Angel were chosen from thirteen candidates nominated by the two "Y's" in an election held by the student body in assembly on December 10. Because a re-vote would have meant the publication of the Madonna-elect, it was agreed that both candidates selected for this role should take part.

Guardian angels were characterized by Laila Grubb, Nan Rennie, and Emily Woodford; while Juanita Cocke, Lou Jefferson, Johnnie Lou Thompson, and Betty Lou Walters served as the angels of the heavenly host. Wise Men and shepherds visiting the Christ Child were played by Judson Baldwin, Bill Bowman, Dick Boyer, Leroy Harper, Harry Jeavons,

## Glee Club Presents Christmas Program



DECEMBER 9, 1951—A scene from the Glee Club's tableau of Christmas cards. Left to right: Sarah Thompson, Ethel Messick, Barbara Striker, Barbara Wilson, and Anne Reed. All the girls in the tableau are members of the Glee Club.



DECEMBER, 1951—As appeared in the 'Y' Pageant are, left to right: Anne Colonna, alternate first angel; Marilyn Miller, Madonna; Reid Waggy, Joseph; and Betty Hiner, alternate first angel.



DECEMBER 8, 1951—The figure at the Panhellenic Dance. Led by Frances Mosely, chairman of the Panhellenic Council, the figure formed a Christmas Candle, the letters P. C. and then '52. Members of the Panhellenic Council and their escorts made up the figure. Dr. Otto Von Frederickson announced the names as they came through the arch in the background.

and Charles Wynes.

The Christmas Story, narrated by Sue Weddle, was presented in four tableaux: The Shepherds, "And they came with haste and found Mary, and Joseph and the babe," The Wise Men, and The Nativity. Each of the scenes was taken from the actual Bible story as found in the New Testament.

Choral music, used as a background for the tableaux, was supplied by the Madison College Chorus, with Elizabeth Woolfolk at the organ. Violin soloist was Mildred Gunn who opened the program with "Ave Maria," while Raymond Showalter concluded the presentation by singing "The Lord's Prayer." Director of the performance was "Y" cabinet member, Mancha Holland.



# MERRY CHRISTMAS TO ALL; AND TO ALL, HAPPY NEW YEAR



We're back from our trip to Santa land! Doodleschnook showed us the paths; returned us safely—but with conditions!

Says Doodleschnook, "You must take a message to Madison students, faculty, and staff."

"Gladly," say we.

"You must say that Santa, his reindeer, all of his helpers, and I, Doodleschnook, wish everyone a very, very **Merry Christmas**, and that we, too, hope that 1952 will bring Peace on Earth and Good Will Toward All Men!"

The Breeze staff is more than happy to deliver Doodleschnook's message and to it we add our own best wishes for a "Merry Christmas and Happy New Year!"—and especially to Pfc. Dick Ward and Allan Mally.

## 1951 May Day Stars Cocke, Summerville



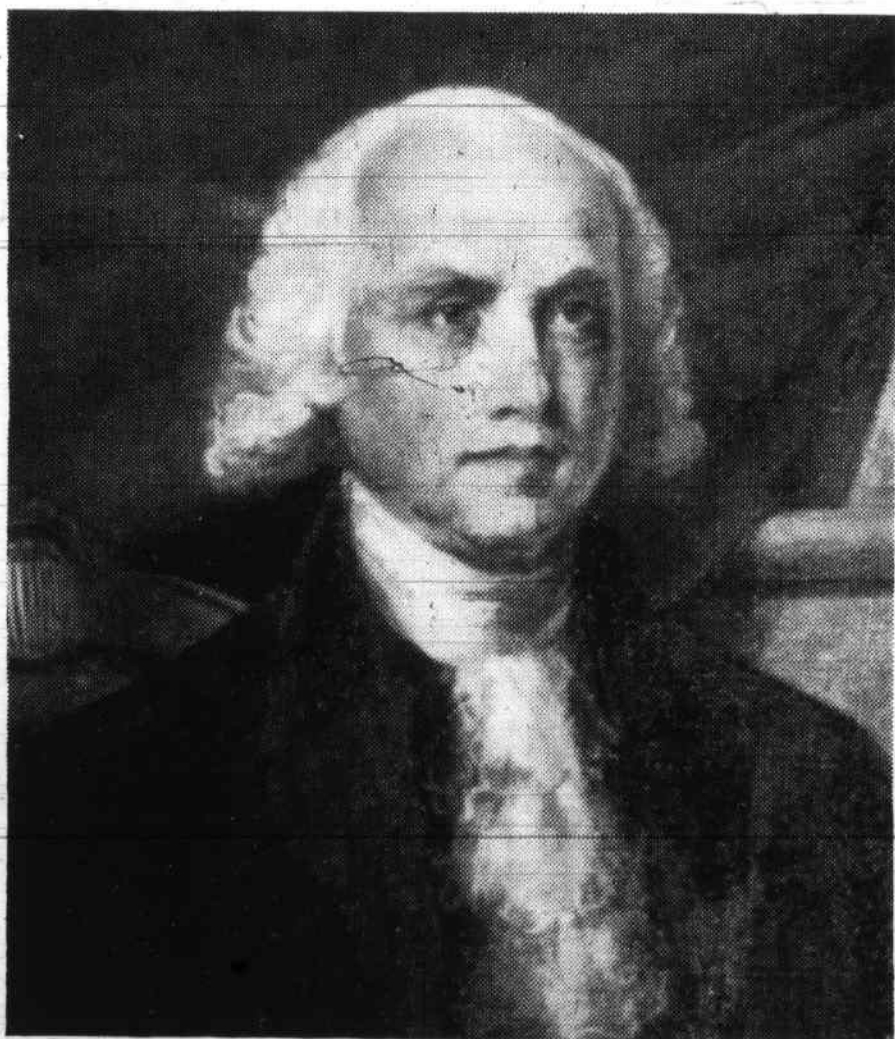
MAY, 1951—Barring only graduation, May Day here is the most exciting time of year, particularly for seniors. Shown above are Connie Summerville, matron of honor, and Jeanette Cocke, May Queen.

## New Building Has Momentous Beginning In 1951



SEPTEMBER, 1951—New building, which is to become part of Madison scene, has its beginning with the above members of the faculty and administration on hand at the ceremony—President Miller and Mr. Warren breaking the ground.

## S. Castine Wins Madison Salutes James Madison Hallowe'en Prize With Massive 1951 Celebration



OCTOBER, 1951 — Hallowe'en brought out all of Madison's spooks, as each dining hall became the focal point of festivities. Shirley Castine, above, won a prize for wearing a unique costume.

## 1951 Welcomes Class Of '55



SEPTEMBER, 1951—Amid excitement of reunion, the class of '55 (whose leaders are shown above) joined the busy throng of college life at Madison.

MARCH, 1951—Celebrities from various points throughout the nation gathered to honor James Madison on the two hundredth anniversary of his birth. Madison College was the focal point of the monumental celebration.