

# Keep Our Workplace Safe!



## The Relationship Between Nurse to Patient Ratios and Health Outcomes

### Benefits of Low Nurse to Patient Ratios



Every increase of one nurse, patients were **14% less likely** to experience **mortality** while in the hospital



Nurses **less likely to experience** needle stick injuries, job dissatisfaction, emotional exhaustion, and stress



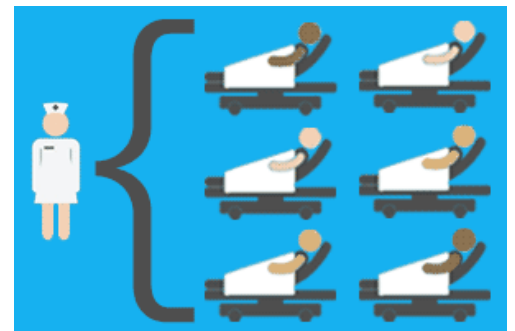
**Increase** in patient satisfaction and **decrease** in adverse events



Nurses **feel safer** with lower patient ratios



The cost of additional staffing is **less than** the cost of hospital-acquired infections



### Higher Ratios Can Lead to Burnout

Each additional **patient** over 4 per **nurse** carried a **23% risk** of increased **burnout**.



### Positive Effects of Adequate Staffing

**Lower** incidence of CAUTIs and CLABSIs, **shorter** length of stay, and **greater** satisfaction with nursing staff.

