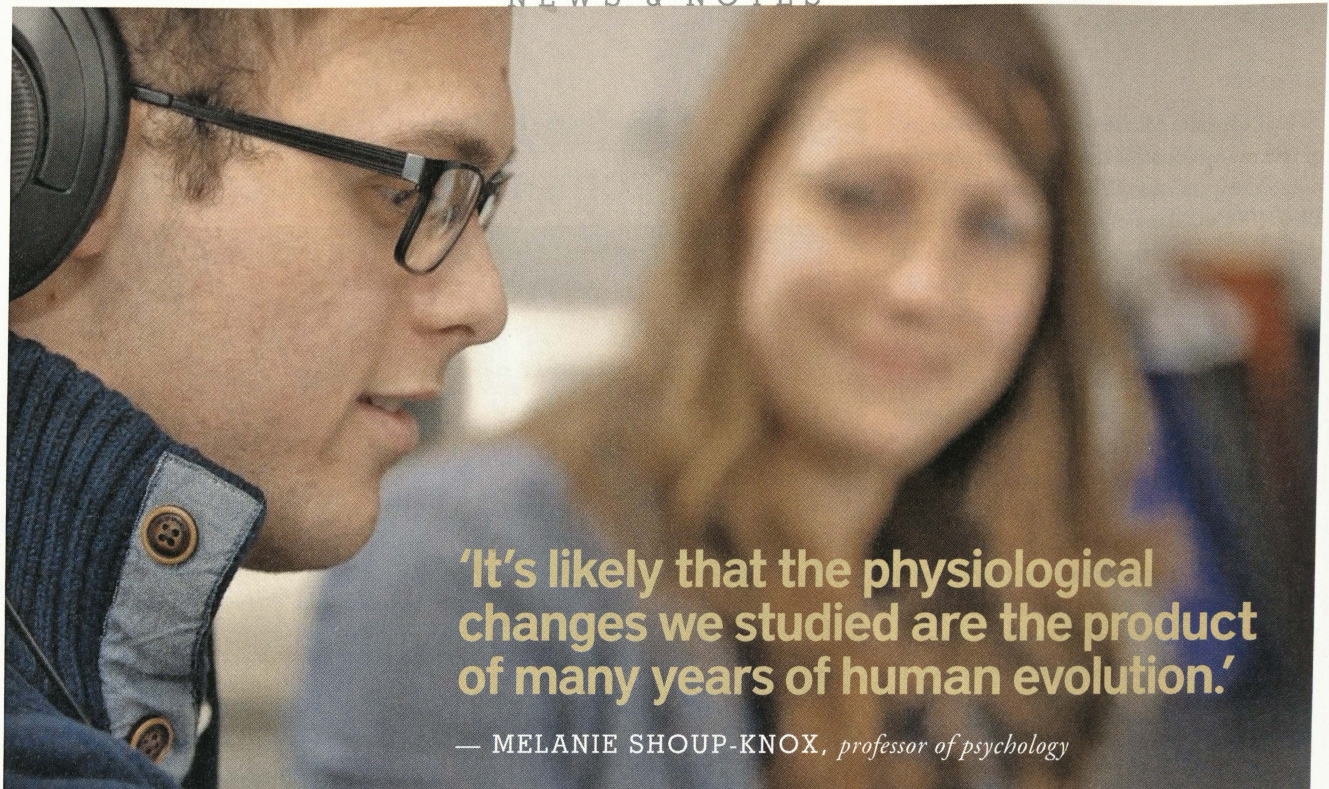


NEWS & NOTES



**'It's likely that the physiological changes we studied are the product of many years of human evolution.'**


— MELANIE SHOUP-KNOX, *professor of psychology*

## The science behind the siren's song

Psychology professor studies the power of the female voice

**T**here's a lot to love about the human voice, not least of which is its ability to attract a mate. JMU's Dr. Melanie Shoup-Knox has garnered a lot of media attention for her study of female voices. Prior research has shown that hormonal changes during a woman's menstrual cycle alter her voice in ways that listeners instinctively find attractive. But

according to a new study co-authored by Shoup-Knox, assistant professor of psychology, a woman is in full command of her vocal charms when she is at her most fertile time of the month. M

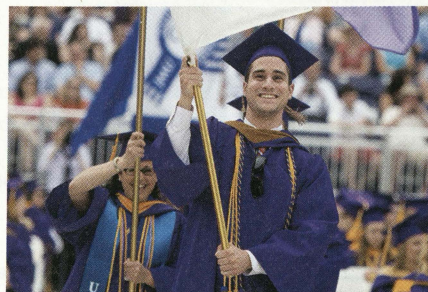
 **WATCH "LISTENING FOR LOVE"**  
Learn more about Shoup-Knox and her voice research at <http://j.mp/1HKho1Q>

## RANKINGS

### New MBA option available

The JMU Board of Visitors recently approved a new executive leadership concentration within the university's MBA program. The new and uniquely focused MBA concentration fills a gap in the MBA market for individuals who want

more than a generic, traditional part-time MBA and who are not at the corporate level required to enroll in a traditional executive MBA program.



### JMU included in Princeton Review's 'Colleges that Pay You Back'

James Madison University continues to hold a place in the Princeton Review's annual book of colleges that the education services company recommends as the nation's best for academics, affordability and career prospects.

