
Creating DOIs with DataCite for Ingestion into bepress Digital Commons

Rebecca B. French

James Madison University

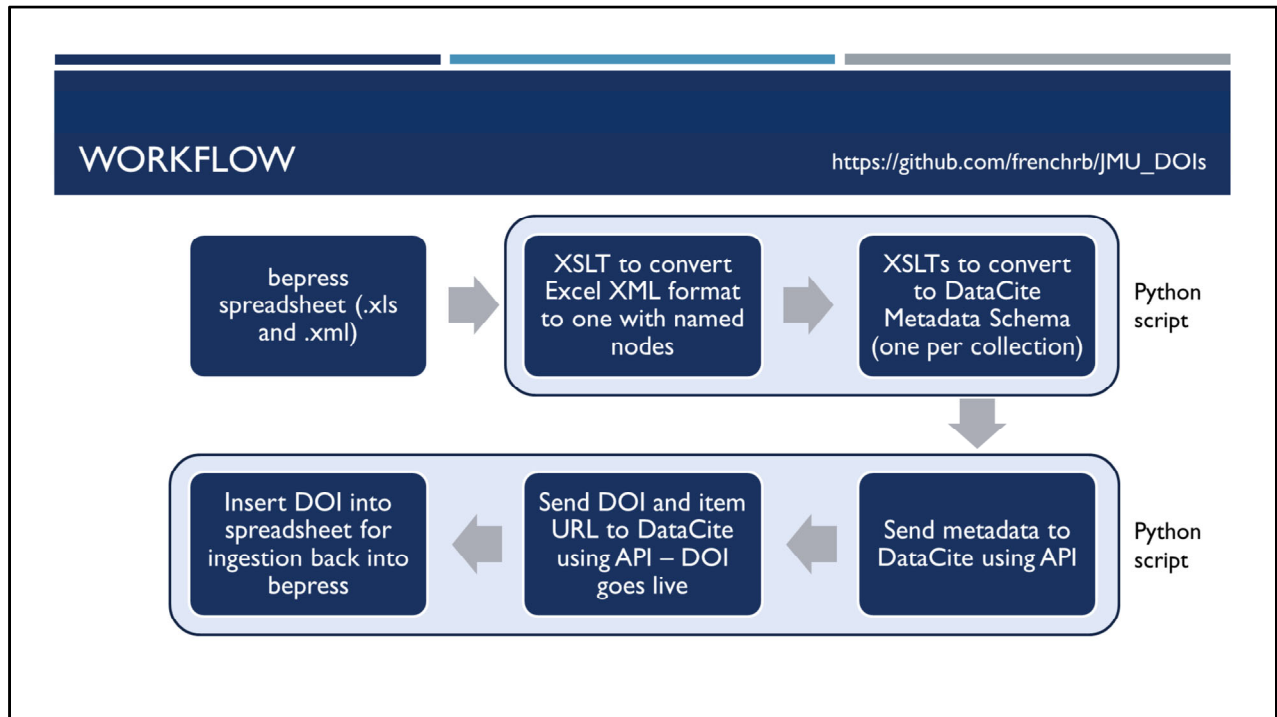
https://github.com/frenchrB/JMU_DOIs

PROJECT OVERVIEW

- DataCite
- bepress Digital Commons (JMU Scholarly Commons)
- Project goals
 - Develop workflow and tools for creating DOIs
 - Retrospectively create DOIs for most items in Scholarly Commons
 - Incorporate DOI creation into workflow for new materials
- Experimented with scrum

Bepress: can get data out via spreadsheet or OAI-PMH; were going to use OAI-PMH but then discovered it was only set up for a few collections
Only way to get data back in (in batch) is by uploading a spreadsheet

Workflow will ultimately need to be used by non-technical staff



Workflow also works for updating the metadata in DataCite

Have done this for one collection so far; next step is to continue writing XSLTs for other collections and creating the DOIs

Future plans: GUI or web interface